



**GP**

**CONCRETE CREATIONS**

EXCELLENT RANGE OF CONCRETE PRODUCTS

UNAD TANK

☎ **+91 77790 77007**



## STEP OUTSIDE THE ORDINARY

**Knowledge, passion, innovation and an eye for design - these are the qualities that brought gp to life and continue to drive its success.**

### Quality concrete paving products

GP concrete creations manufacture a wide range of standard and specialist concrete block pavers, permeable pavers, kerbs and ancillaries.

GP are flexible and are always pleased to work with specifiers to produce bespoke colours and surface textures for special projects.

The technology used in the works and the Company's quality assurance scheme provides complete works traceability of each product.

Concrete block paving is widely recognised as a cost effective, durable and attractive surfacing material.

It is extremely versatile and is suitable for use on projects as diverse as: car parks, industrial estates, retail centres, pedestrian areas, domestic drives, motorway services, airport service areas and aprons, garages, lorry parks and other heavy duty applications. .

### Salient Features:

- Fully Automated plant with German Curing Technology.
- Deliver Unparalleled performance and high quality production.
- Exceptional quality of products matching internationale standards.
- Annual production capacity of 10 million units and above.

### Unique Advantages :

- Concrete products with very high compressive strength.
- Manned by professional workforce.
- High dimensional accuracy.
- High resistance to weather and corrosive elements-highly durable.
- Cuts down plastering cost due the superior external surface finish by Engineered solid blocks
- Products confirm to relevant IS standard.

### PROPERTIES OF OUR PAVERS

- Highest strength & density and lowest water absorption compared to any other in the market
- Manufactured in automated Germany machine using highly precise German moulds
- Unique designs of the paver blocks .
- UV stable colours (imported from Germany)
- Available in plain finish, shot blasted and Premium shot blasted finish
- Available in various sizes and patterns suitable for light, medium, heavy and very heavy traffic Large capacity production for quick dispatches



## Inspiring Artscapes

You're not looking to blend in,  
but rather stand out from the crowd.  
We take that philosophy to the outdoors,  
reshaping the idea of what  
landscapes can look like.

WE LIVE TO CREATE

Welcome  
to the  
Paving *Paradise*





# FACE TEXTURES

## Plain Texture

A double layer paver with smooth finish top surface generally used for colored pavers. This surface is good for light and medium traffic area like residential and commercial projects.

## Monolayer Texture

A single layer paver generally used for heavy traffic area like ports, roads, container yards, etc.

## Shot Blasted Texture

Expensive coloured face mix materials can be exposed in the shot-blasting process making the surface slightly rough with better architectural finish. Generally preferred for premium landscaping projects.

## Colored Chip Texture

Rough texture with exposed granite aggregates, generally suitable for areas with high footfalls.

## Stone Texture

A surface with pockets and ridges, resembling a natural stone texture is created on pavers. Generally used for pathways and driveways.





# PAVER

Economical and ubiquitous, the unipaver is one of our most popular paving solutions. The Uni is most renowned for its superior locking strength. Its serrated edges ensure that each block fits snugly against the next, creating an interlocked pattern capable of taking on enormous loads. The inherent shape of the paver, with its two axis upon which concentrated loads can be placed, results in a uniform distribution of weight and an optimal release of tension. This explains the Uni's outstanding durability, and why it is commonly used for covering large areas that witness heavy vehicular and pedestrian traffic.

Another reason for its popularity is that it remains unaffected by changes in season, be it scorching summers or biting winters, and requires no extra maintenance. The Unipaver can be laid in various patterns such as the stretcherboard, basket weave or herringbone. The Unistarter shape is used in tandem with Unipaver to create straight edges for the paving areas.





### Features of ZIG ZAG Paver

Renowned for superior locking strength of the Unipaver shape

Possessing by far the ultimate in locking system, Uni Pavers can sustain enormous loads making it the most widely used concrete block paving for both commercial and industrial paving.

### Dimension

225 X 112.5 X 60 / 80 / 100 mm

### Notes

One of the oldest and most trust worthy interlocking paver



# SQUARE

A simple and popular paving solution, the Square paver is an economical paving range with a wide variety of applications. With a good resistance to load, Square pavers are commonly used for walkways and pathways that witness heavy pedestrian and light motor traffic.



## Features of SQUARE Paver

Easy to pack and ship, the Square shape offers great flexibility in design as they can be used in combination with other paver shapes such as Hexagonal and Rectangular to create a variety of interesting patterns. From conservatories to courtyards, the Square is a beautiful and practical paving solution for most paving needs.



## Dimension

Available in different sizes

100 X 100 X 60 / 80 mm

150 X 150 X 60 / 80 mm

200 X 200 X 60 / 80 mm

300 X 300 X 60 / 80 mm

## Notes

Can be used alone or in combination with a variety of other products





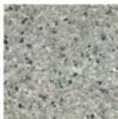
### Available Texture



Plain Texture



Premium Short Texture



Colored Chip Texture



Stone Texture





# RECTANGULAR

The Rectangular paver is one of the simplest and most widely used paver shapes worldwide. Prevalent from ancient Roman times, the Rectangular shape is a timeless classic popular for its ease of use and versatility. They are easy to pack and move, and can be laid in a range of interesting patterns that work well in most scenarios. With a high degree of resistance to loads, Rectangular pavers are commonly used for areas with high pedestrian traffic such as sidewalks of major roads and walkways in supermarkets, parks and patios.

Look beyond its initial simplicity, and the Rectangular paver can surprise with its limitless design possibilities.



## Features of RECTANGLE Paver

With its simple shape and utilitarian appeal, Rectangle paver is a practical choice for a variety of residential and commercial installations. Its exceptional strength and durability combine with a range of captivating color blends that add to popularity.

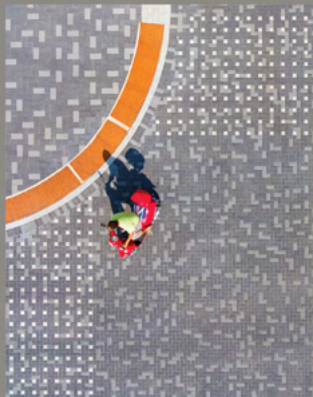
## Dimension

Available in different sizes  
200 X 100 X 60 / 80 / 100 mm  
300 X 200 X 60 mm  
400 X 200 X 60 mm

One of the oldest and most commonly used pavers

Ideal for pedestrian walkways, pathways and patios

Popular for being extremely cost effective yet versatile

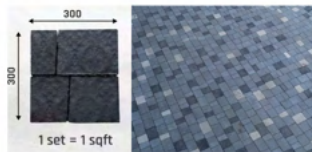




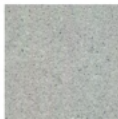




# BEGANITE



## Available Texture



Plain Texture



Premium Short Texture



Colored Chip Texture



Stone Texture









## *Art Deco Design*

OUTDOOR ENTERTAINING Movie buffs rejoice!  
A glitzy patio sets the stage for movie nights under  
the stars. This Art Deco inspired pattern is the  
perfect backdrop for your family film festivals.

# CIRCULAR PAVER BLOCKS



With different sizes of circular paver blocks , there would be **NO CUTTING** for making of circle with our Pavers

Our Circular block paving is a specially designed system for the easy creation of circular patterns. Displaying a timeless elegance, our block paving can match the traditional splendor of a period design or add character to a modern environment.

With the help of professionals, our firm is accomplished to provide Circular Design Paver Blocks in diverse specifications It can be combined with cobble paving to give extremely smart timeless design options.



# VENUS

Taking its name from the mythical planet of the same name, the Venus series makes a bold statement with alluring patterns reminiscent of breathtaking perspectives and geometric illusions. The signature "diamond" shape of the Venus series lends itself beautifully to striking laying patterns, and is a visual play of sharp angles and optical illusions.

Choose the Venus series for a spectacular style that is sure to add a memorable and bold statement to your environment. Especially striking on installations over large areas, the Venus adds a new dimension and character to your paving like no other.



# MODULAR PAVERS

We have introduced modular pavers as a concept that involves joining various sized pavers together in various patterns giving more flexibility in design and color. These pavers help to transform the outdoors into functional works of beauty.



200 X 125 X 60 mm



150X 150 X 60 mm



200X 200 X 60/80 mm



200X 100 X 60/80 mm



100X 100 X 60/80 mm



200X 275 X 60 mm



200X 175 X 60 mm



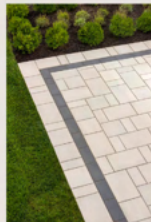
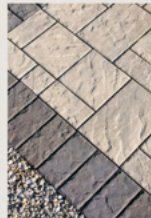
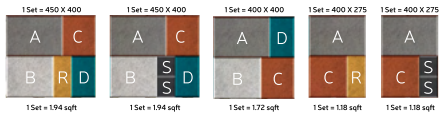
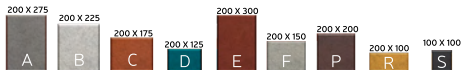
200X 225 X 60 mm



200X 300 X 60 mm







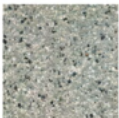
## Available Texture



Plain Texture



Premium Short Texture



Colored Chip Texture



Stone Texture



*New Product*

## **POLYGON BEAUTY**

### **Dimension**

Following sizes in 1 pallet (light traffic/decorative)

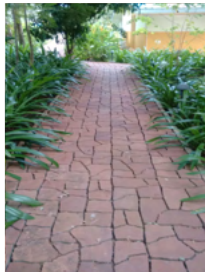
135 X 165 X 80 mm

270 X 330 X 80 mm

270 X 165 X 80 mm

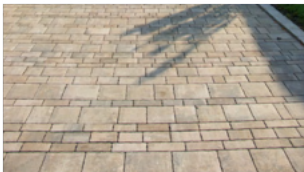
### **Notes**

Irregular pattern gives this product an old world charm, joints can be filled with sand or colour chips



## DECA STONE

Deca Stone Paver has a look reminiscent of natural stone. It's slate texture, large and modular shapes, rich color blends make it the ideal choice for any landscape design. Nothing quite compares to the warmth and individuality of natural stone within a landscape design natural stone finish will help achieve the look of old Europe or contemporary North American designs.

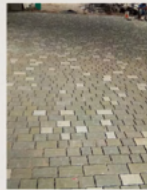
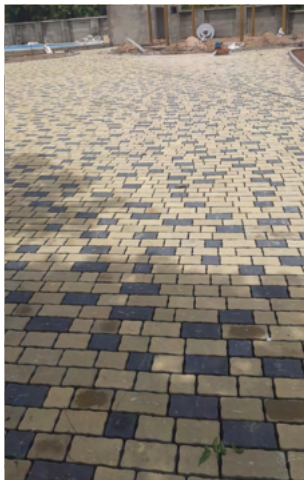




# RUSTICO

Influenced by the paved walkways of ancient Rome, the Rusto series is a departure from the clean-cut lines of more commonly used pavers. Emanating an old-world charm and timeless appeal, Rusto derives its name from the rustic aesthetic it has become synonymous with.

Rusto comprises three distinct shapes that can be laid combination with each other. The real beauty of Rusto lies in the visual movement its patterns create when used over large areas.

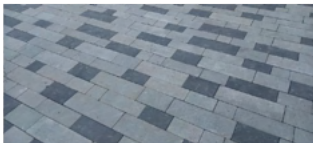




# FLEXI SLEEPS

One of most popular ranges, Flexi Sleeks is a multi-faceted paving solution suitable for driveways, walkways, patios and everything in between. The versatility of Flexi Sleeks truly comes to the fore when colours and finishes are mixed together to create a limitless array of design possibilities that attract the human eye with ease.

Whether a simple residential setting or a larger public area, Flexi Sleeks is a popular solution for most paving requirements. With a design that's modern and contemporary, it offers a clean, international look to any commercial or residential environment.



## Dimension

5 piece combo (light traffic / decorative)

477 X 117 X 80 mm

357 X 117 X 80 mm

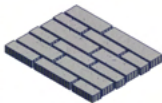
227 X 117 X 80 mm

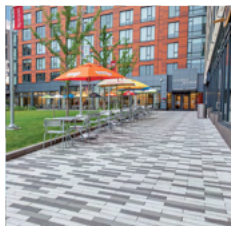
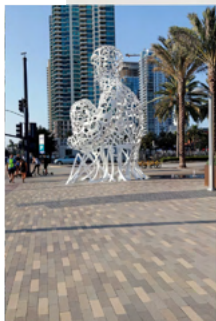
477 X 157 X 80 mm

637 X 157 X 80 mm

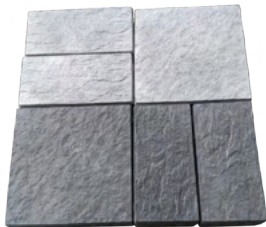
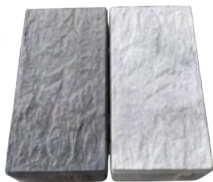
## Notes

Long sleek lines make this product a great choice for linear areas, available in smooth and undulated finish





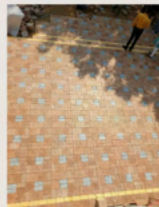
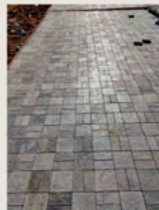
# GLOSSY FLEXI



## Dimension

200 X 200 X 60 mm

200 X 100 X 60 mm





# STRIPS

Make a stunning statement with the bold, rectangular shapes of Strips, a perfect addition to any modern outdoor space. A combined range of concrete block and textured flag paving, Strips evokes a sense of strength, stability and dependability with its large shapes and bold form.

Strips is available in a variety of colours and textures, and is a perfect fit for contemporary structures due to its straight lines and sharp angles which are always in harmony with modern architecture.



## Dimension

light traffic / decorative  
250 X 62.5 X 60 mm

## Notes

Small and versatile paver can transform areas,  
undulated finish gives it a rustic look





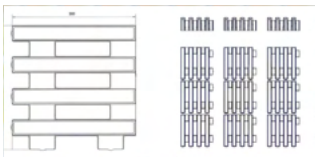
# TURF LINES

## Dimension

300 X 300 X 120 mm - medium / heavy traffic

## Notes

Strong sleek lines allow the artline to be used in heavy traffic areas





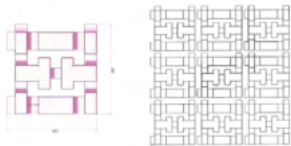
# TURF GRID

## Dimension

330 X 330 X 120 mm - meduim / heavy traffic

## Notes

Powerful design gives this product a bold look



# INFINITY TURF



## Dimension

400 X 200 X 80 mm - meduim / heavy traffic



*Coming Soon*

## ECO ELEMENT

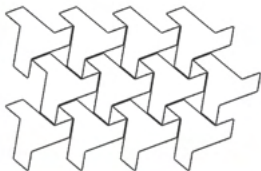
### Appearance:

flat surface and straight edges, polygon shape

### Designation:

Driveways and car parks, walkways, terraces, garden/paths/alleys, roads, eco

Eco element is a unique concrete paving stone. It is a one piece element with a unique shape that hides an incredible wealth of design possibilities. Eco element will allow the creation of impressive paving in a uniform and, most importantly, ecological edition. Eco element is the answer to the conscious eco-needs of the users! One element, numerous possibilities.



3% of biologically active surface



14% of biologically active surface



25% of biologically active surface

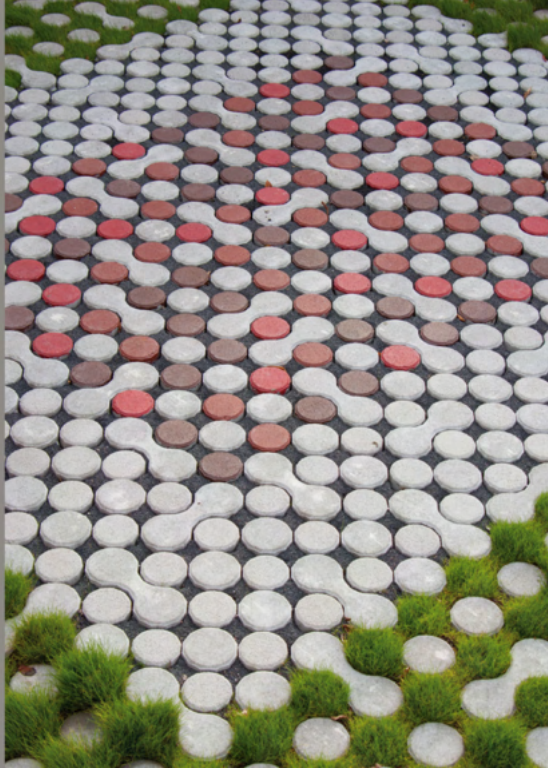


33% of biologically active surface





*Coming Soon*  
**CIRCULAR TURF**



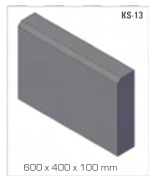
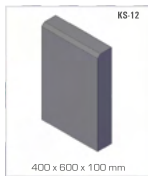
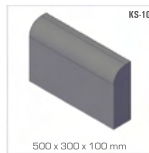
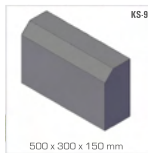
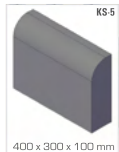




*Coming Soon*  
**ABSTRACT TURF**

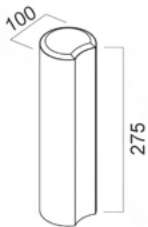


# KERBSTONE

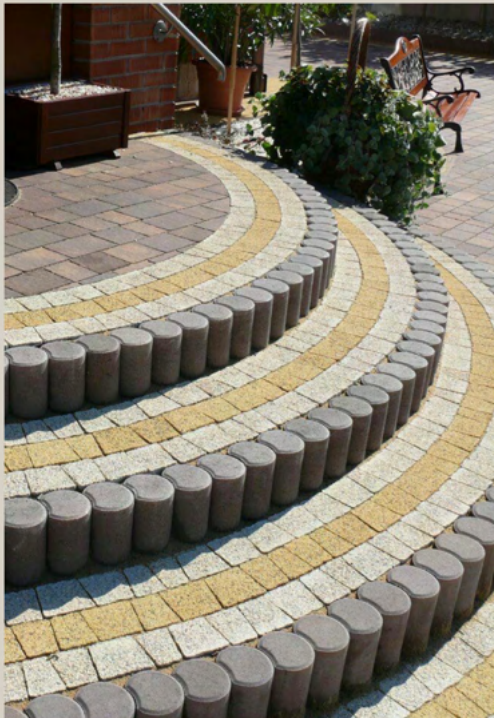


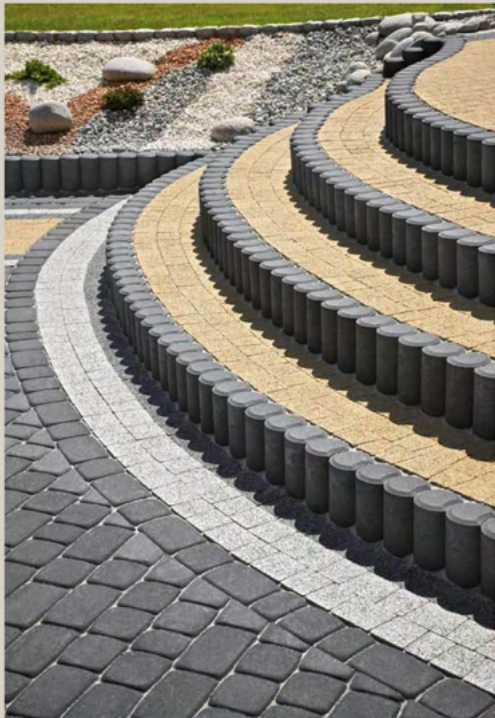
## *New Product* **CIRCULAR KERB**

The Circular Kerb is a very popular finishing element. Its circular cross-section with a one-sided indentation makes the area where it is applied look neat and tidy. A kerb is an excellent decorative element, thanks to which you can arrange a garden in an interesting way, isolate flower beds, ponds or strengthen the slopes of the area. The palisade is also used as a setting for stairs and garden paths.



Joining Kerb with a diameter of 100 mm have a circular cross-section with a partial indentation of the same radius. The resulting "tongue-and-groove" meshes ensure a particularly dry bond, enabling the transfer of high side loads. These properties are also retained in curved arrangements. Internal, axial cavities are not without significance for the ease of installation and the increase in strength. Allow to achieve almost unlimited ways of creating exceptionally beautiful lines with a regular course.







# WALL BLOCKS

## Solid Blocks

Concrete blocks are substitutes for conventional bricks and stones in building construction. They are light in weight, easier to place and also confer economics in foundation cost and consumption of cement. In comparison to conventional bricks, they offer the advantages of uniform quality, faster speed of construction, lower labour involvement and longer durability used in construction activities.



390 x 190 x 190 mm



390 x 190 x 140 mm



390 x 190 x 90 mm



## Features of Solid Block

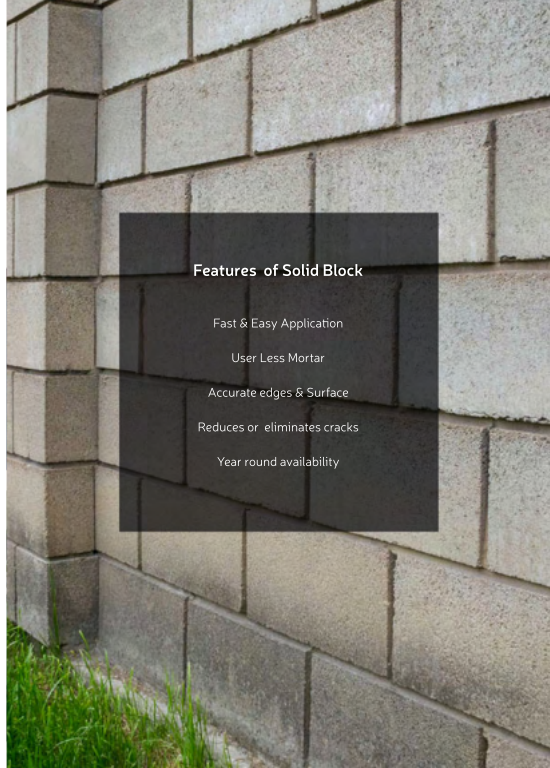
Fast & Easy Application

User Less Mortar

Accurate edges & Surface

Reduces or eliminates cracks

Year round availability



## Hollow Blocks

This construction system provides better acoustic and thermal insulation for the building.

This system is durable and maintenance free.

Reduction in dead load

Reduced Air conducting load : Approx. 50% saving.

No salt peter or leaching : Reduction in maintenance.

Environmental Eco-Friendly

Assured Quality : Fully automatic block plant.

Reduced thickness of plater : Due to size accuracy & less cement consumption due to few joints.

Better sound absorption : being hollow in nature.

Load bearing wall : Due to higher strength of blocks.

Recommended for earth quake resistance.

Less water absorption : Approx. <7%

Faster construction : Easy to work with bigger in Size.



390 x 190 x 190 mm



390 x 190 x 140 mm



390 x 190 x 90 mm



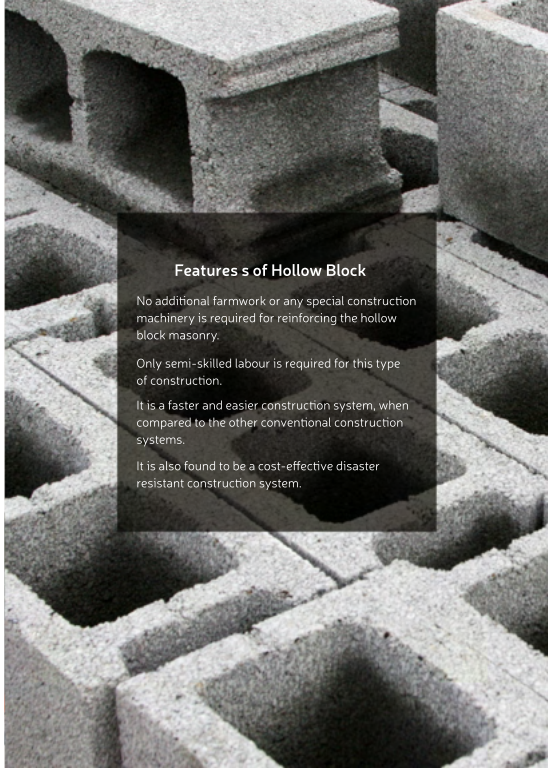
### Features of Hollow Block

No additional formwork or any special construction machinery is required for reinforcing the hollow block masonry.

Only semi-skilled labour is required for this type of construction.

It is a faster and easier construction system, when compared to the other conventional construction systems.

It is also found to be a cost-effective disaster resistant construction system.



# JALI

Adorning temples, homes and more with something beautiful yet affordable has got with our offered Concrete Precast Jali.

This durable and cost-effective jali is available in standard and customized specifications.

This jali makes a great addition for ventilation in spaces along with making them appear decorative and attractive.

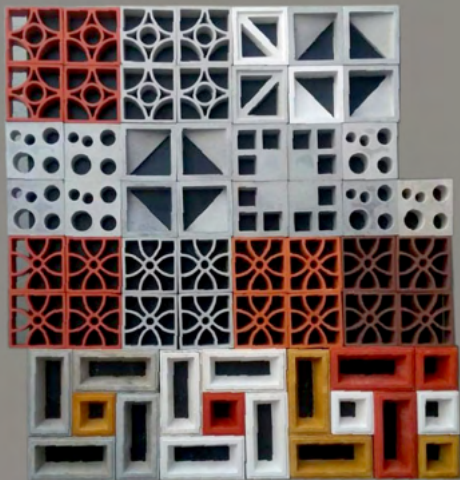
## 2. PRODUCT & ITS APPLICATION:

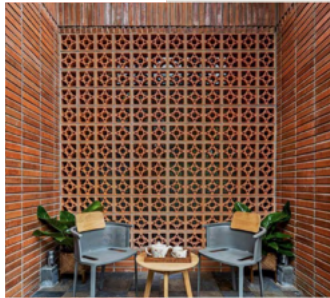
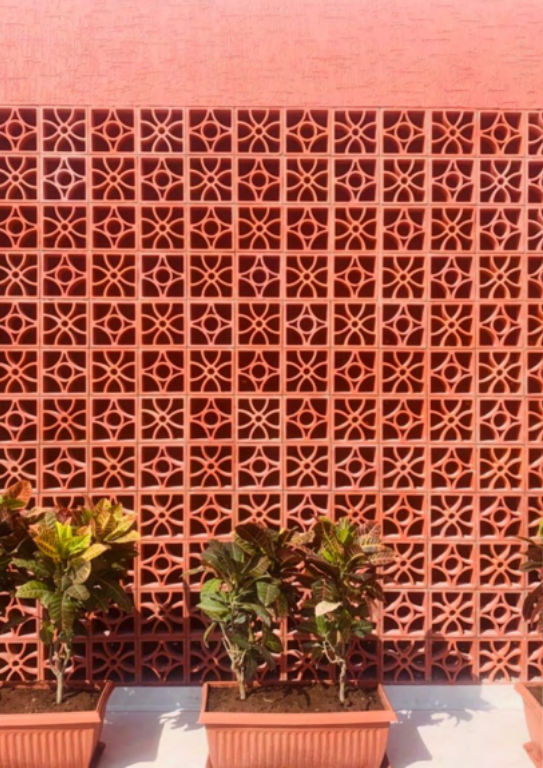
Cement jalis are used even in city, especially in public buildings like schools, institutions or government offices.

Cement jali can be seen in parapet jali, stair railing jali, jali screens, and ventilator. Cement jali when used as boundary walls for gardens, it regulates the flow of light and air and also prevents unwanted animals and peoples to enter the garden. It is important to have attractive designs and shapes to make consumer friendly.

## 3. MARKET POTENTIAL:

The demand for cement jallies increases correspondingly with the increase in building construction activity. It is fast growing in the country. Apart from low cost, other contributing factors to their demand are fascinating designs and functional qualities in the market. The consumption of cement jali in Gujarat is mainly in rural areas. There are about fifty units making jali in Gujarat to meet the requirements. There is a good scope to develop MSME units in this line of manufacture for local consumption. Low cost and affordable housing schemes of new Govt. will boost the demand for building materials. Also, new infra projects will create demand for such product in near future.



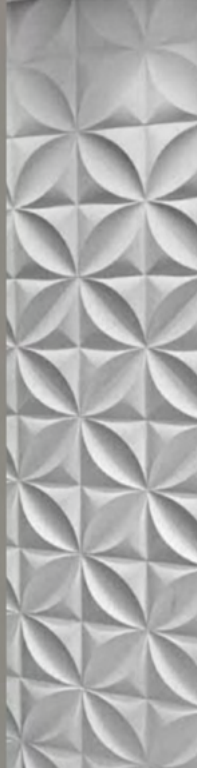


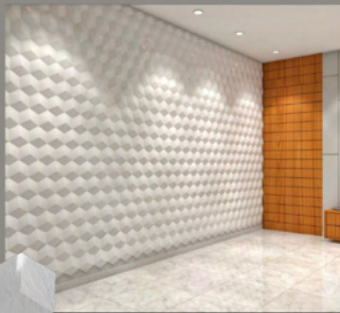


# WALL CLADDING

Introduces you to the luxury side of CONCRETE. We use the state of the art technology to create a perfect blend of materials and designs that bring elegance and add style to your spaces. Transform ORDINARY INTERIORS INTO LUXURIOUS experiences with our bespoke designs .These cladding are used as an INTERIOR & EXTERIOR wall cladding material in residential, commercial and industrial buildings. One of the most advantages of PRECAST CONCRETE wall cladding system ,they do not contract and expand, unlike exterior wall cladding panels made with traditional materials.







# Concrete Bollard

When it comes to pedestrian safety, bollards can use to protect people and property from vehicle intrusions.

Precast concrete bollards are one example of a decorative bollard that provides impact protection without distracting from the landscaping and architectural style. Reinforced with steel for exceptional strength and available in many shapes, sizes, and surface finishes, concrete bollards can be used for any permanent bollard application.

Concrete bollards are manufactured with high-grade concrete and steel materials to offer site managers the security and durability they need to protect pedestrians and buildings from vehicular traffic.





# SAUCER DRAIN

## OVERVIEW

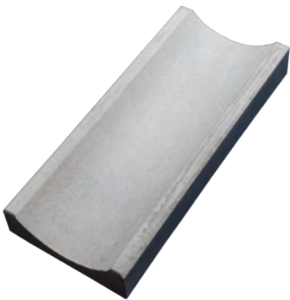
Saucer drains provide a means to collect water overflows or storm water in pedestrian areas, malls, parking lots, etc. They also come with holes to allow the collected water to be discharged into a another drainage system.

## FEATURES

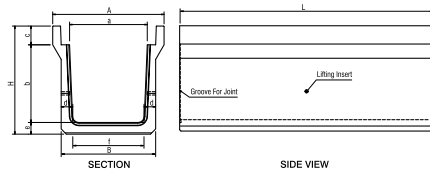
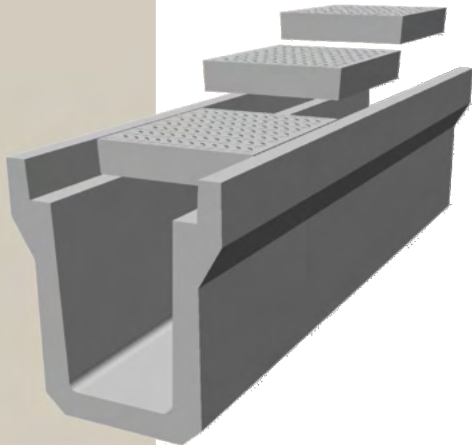
Can be solid or perforated

Manufactured by M-30 grade of concrete by vibro compaction process using joint less FRP moulds so as to achieve shuttering finish.

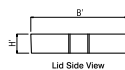
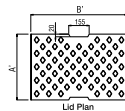
Perforated saucer drains are reinforced, while the plain ones can be reinforced on request



# Heavy Duty U SHAPE Drain



Size(mm) a X b	Dimensions of U shape drain (mm)										Ref. Wt. (Kg.)
	L	A	B	H	a	b	c	d	e	f	
300 x 300	2000	540	420	490	300	300	110	70	70	280	435
450 x 450	2000	700	590	660	450	450	130	80	80	430	657
600 x 600	2000	860	730	835	600	600	145	90	90	550	890
750 x 750	2000	1050	890	1000	750	750	150	100	100	690	1200
900 x 900	2000	1200	1070	1170	900	900	150	120	120	830	1646
1200 x 1200	2000	1500	1340	1470	1200	1200	150	120	120	1100	2185

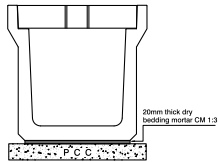


Size of Drain a X b (mm)	Lid Dimension (mm)			Ref. Wt. Kg
	A'	B'	H'	
300 x 300*	500	410	110	53
450 x 450	500	572	130	87
600 x 600	500	732	145	125
750 x 750	500	892	150	158
900 x 900	500	1052	150	197
1200 x 1200*	1000	1300	150	447

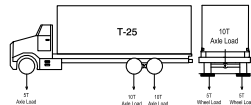
\* Top surface of lid do not have anti-skid finish.  
# Different perforation pattern than drawing.



Typical Joint Details



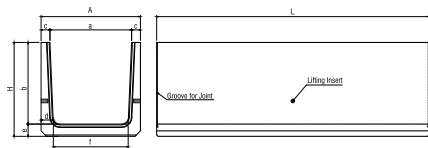
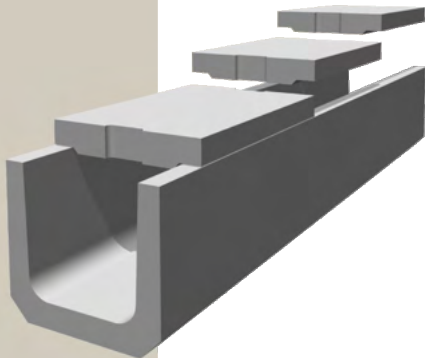
Typical Foundation Details



LOAD CARRYING CAPACITY : 5 T Wheel Load (T-25)

Note: DUSD (T-25) is a longitudinal drain and it is intended to be used at the shoulder of the road.

# Light Duty U SHAPE Drain



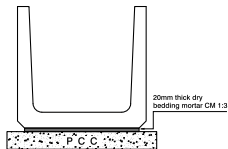
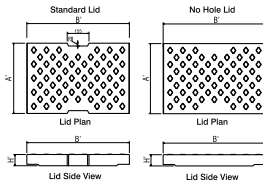
SECTION

SIDE VIEW

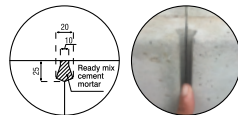
Size(mm)	Dimensions of U shape drain (mm)										Ref. Wt. (Kg.)
a X b	L	A	H	a	b	c	d	e	f		
300 X 300	2000	420	370	300	300	60	70	70	280		320
450 X 450	2000	550	520	450	450	50	70	70	410		441
600 X 600	2000	730	680	600	600	65	80	80	550		675
750 X 750	2000	890	840	750	750	70	90	90	690		930
900 X 900	2000	1070	1010	900	900	85	110	110	820		1345

Size of Drain a X b (mm)	Lid Dimension (mm)			Ref. Wt. Kg
	A'	B'	H'	
300 X 300	500	410	60	26
450 X 450	500	550	70	45
600 X 600	500	730	80	67
750 X 750	500	890	80	91
900 X 900	500	1070	100	125

\*Top surface of lid do not have anti-skid finish.



Typical Foundation Details



Typical Joint Details

# Tree Guard



Size : 600 x 600 x 80 mm



Size : 450 x 450 x 40 mm



Size : 800 x 800 x 80 mm



Size : 1800 x 1800 x 40 mm



Size : 1100 x 1100 x 40 mm



## RETAINING WALL BLOCKS

Plantable Retaining Wall Blocks are designed with an innovative planting system, allowing vegetation to be grown directly from the wall face. Based on retaining wall block, plantable provides a planting cavity ideal for up to one gallon plants space for drainage & root growth, and a specialized channel for running irrigation lines. Working in conjunction with retaining wall block; the number of plantable rows in each wall project is completely customizable.

At each row of Plantable units, the wall will set back a small distance

Excellent for straight, curved, and terraced retaining wall designs

Connect units using specialized fiberglass pin system



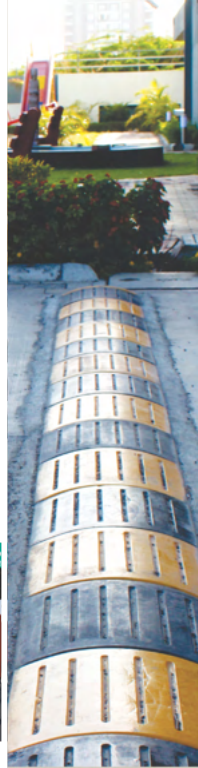
## Tiles



## Speed Braker



Size : 350 x 350 x 100





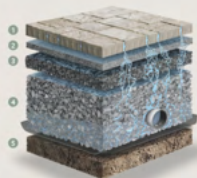
## Eco-conscious

### Permeable solutions

Urbanization has led to the covering up of naturally permeable vegetation such as forests and grasslands, replacing it with hard surfaces like buildings, roads, and parking lots. The opportunity for infiltration and evapotranspiration of rainfall has become the primary drainage mechanism. As water runs off urban surfaces it picks up sediment, road salts, metals, oils, pesticides and other harmful pollutants, which are being fed to our rivers and lakes. With climate change increasing the frequency of heavy rains and accelerated snowmelt causing additional stress on our environment, we are pressed to find sustainable ways to update outdoor spaces with groundwater infiltration in mind.

Designed to allow water to pass through the joints and seep into the ground rather than being channeled into storm drains, permeable pavements made their debut in Europe over 50 years ago. Permeable pavements are a good example of green infrastructure, as they aid in attaining pre-development hydrological conditions by increasing infiltration and evaporation and reducing runoff volumes and flow rates.

### Rain Water Flows Through The Layers



#### 1. PERMEABLE PAVER

Designed with larger joint space to allow storm water to percolate through.

#### 2. SMALL AGGREGATE (2.5-10 mm)

Filters out contaminants and debris from the rainwater.

#### 3. MEDIUM AGGREGATE (5-28 mm)

Transition layer that further filters out pollutants.

#### 4. LARGE AGGREGATE (40-80 mm)

Reservoir layer for rainwater harvesting and the evacuation of excess water through a drain pipe.

#### 5. GEOTEXTILE

Filter fabric that separates large aggregate from the soil underneath.

# Significant

## TOP Layer Bonding

Top Layer is the high performance feature which differentiates us from standard concrete paving. Manufactured with a premium, hard-wearing surface layer which adds significant performance benefits.

### Hard-wearing Surface

Top surface layer has a dense composition of finer aggregates, hard sand and a higher percentage of cement. This hardened surface layer has enhanced strength and increased resistance to wear and tear, for both pedestrian and vehicular traffic.

We produce two different material mixes; the Top layer and a robust base layer formulated for optimum structural performance. Both layers are formed simultaneously, producing an inseparable bond that stands the test of time.

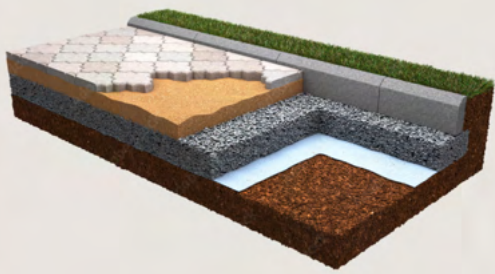
### Aesthetic appeal & enhanced weathering

Top surface layer contains a high concentration of pigment creating vibrant colour and exceptional UV performance leading to enhanced weathering properties. We are renowned for its superior long-term retention of colour and visual appeal.



- ✓ **More Cement**
- ✓ **More Pigment**
- ✓ **Finer Aggregates**





## IMPORTANT INFORMATION

### HEALTH AND SAFETY

Care should be taken when handling and installing GP CONCRETE CREATIONS Units weighing 20kg or more should ideally be handled mechanically, or by two or more persons if the process of carrying is repetitive.

### DELIVERY AND STORAGE

Delivered products should be stacked at a planned location on the site to avoid the double handling. Pavers should be stacked onto a prepared, clean area to minimize soiling and damage. It is highly recommended that the products are kept at a distant location, away from passing vehicles and pedestrians.

### EFFLORESCENCE

All concrete products may, in their early life, appear to lose some intensity of color and experience a white stain on the face of the product. This phenomenon is known as efflorescence, it is a temporary phenomenon and stains will generally clear within a period and stains will generally clear within a period of time. This is not detrimental to the product performance in any way and GP Concrete Creations cannot be held responsible for its occurrence.

### COLOR VARIATION

Due to the phenomenon of different curing, slight color and shade variation do occur on individual colored concrete products. Site conditions, seasonal manufacture, or naturally occurring variations in the aggregates used, can also cause variations. This is generally considered to enhance the natural stone effect and the colors will invariably wither in time.

### MAINTENANCE

It is recommended that the paving materials are cleaned 2-3 times in a year to maintain appearance. Products which are paved on driveway, particularly of light colors, require more maintenance as the tire mark and oil leakage can diminish the appearance. It is recommended to clean using normal water with a soft brush, high pressure jet pumps should not be used. Power washing is to be avoided completely.

### ORDERING

To avoid shortage, wastage of material, please double check the order quantity as GP Concrete Creations will neither be responsible for extra material nor the duration to deliver the shortage material. To avoid any confusion with respect to ordering, it is suggested that the paving tiles are ordered as a total batch and drawn out from several packs at the same time, to enhance any color variation. We recommend that colors are chosen from actual materials rather than color photographs herein.

### WEATHERING

All concrete products will wither and change, especially after a period of time with exposition to natural elements.

### SIZES

GP Concrete Creations paving is manufactured to capture the authenticity of natural stone and as such, they do vary in thickness. All sizes are nominal and customers are advised to check with their supplier. Bulging can occur on larger individual pavers as a natural result of shrinkage. This does not alter the durability of the product.

### LIABILITY

Liability in respect of any statements, conditions, warranties and representations made on behalf of the company, GP Concrete Creations cannot accept liability for any loss, damage or injuring sustained as a result of following it. We will not take any responsibility or liability if products are being used for purposes other than those for which they are intended for by the manufacturers. Due to our continuous evolution of product design and improvement, our range is subject to change without prior notice. Customers are advised to ensure that the stated information is up to date.

### PRODUCT UNSATISFACTORY CONDITION

In case a product is delivered in an unsatisfactory condition, and other than any natural occurring one as described, the defect would have to be informed about apparent prior to laying. It is at this point that the supplier should be notified of such a fault, and allowed time for the rejected product to be replaced. If the complaint is raised after laying the product, no responsibility will be accepted for any relaying or removing costs.



GP

CONCRETE CREATIONS





**GP**

**CONCRETE CREATIONS**

📍 202, Apple Square,  
Gajera School - Gidc Cross Road,  
Katargam, Surat 395004.

📞 **+91 77790 77007**

✉️ [gpconcretecreations@yahoo.com](mailto:gpconcretecreations@yahoo.com)



# RCC Benches





# Speed Breaker



Size : 350 x 350 x 100



Size : 14" Dia



INNOVATIVE CONCRETE SPEED BUMP



# Car Stopper

Size : 1800 x 125 x 175 mm



# Grass Pebble



Size : 500 X 330 X 80 mm



# Plot Indicators



# Bollard





## Barrel Pot



Size : 18 X 18 | 24 X 24 | 30 X 30 inch

## RCC Flower Box



Size : 20 X 48 | 20 X 28 Inch

## RCC Flower Box



Size :  
24 X 18 Inch

Size :  
23 X 23 Inch

Size :  
31 X 24 Inch

Size :  
24 X 18 Inch



### Lawn Fence

Size : 36 x 18 inch



### Baluster

Size : 23 x 4.5 inch



Size : 4 x 16 | 4 X 24 inch

### Timber Kerb



### Bamboo Fence

Size : 4 x 6 Feet



### Flower Pot



Size :30 X 40 X 24 Inch



Size :40 X 40 X 24 Inch

### Lion



Size :47 X 19 Inch

### Table-Stool



Size :39 Inch Dia.



# RCC Customized Benches



## RCC Fence

Size : 1000 x 1000 x 40 mm

Size : 1000 x 1000 x 40 mm

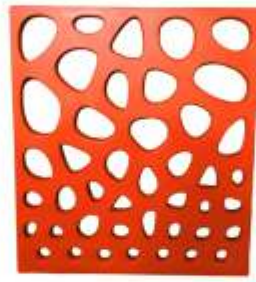
Size : 1000 x 1130 x 40 mm



RF-1



RF-2



RF-4

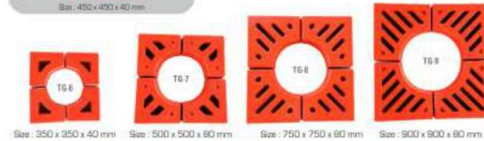
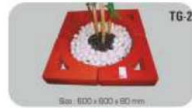


RF-3





## Tree Guard



## Toilet

Inner Size : 3' X 4'  
Height : 6' 3"



## RCC Drain Solutions



## Dustbin

Size - 600 x 1025 x 600 mm



350 (W)  
x 300 (L)  
x 255 (H)

## Saucer Drain



## Unad Tank

+91 77790 77007

gpconcretecreations@yahoo.com

202, Apple Square,  
Gajera School - Gidc Cross Road,  
Katargam, Surat 395004.



GP  
CONCRETE CREATIONS

EXCELLENT RANGE OF CONCRETE PRODUCTS